

Southern Rural Profile Area

Southern Rural Area is the largest of the Cardinia Shire areas. The area is located to the south of Cardinia Shire making up the eastern, southern, and western boundaries of the Shire. Southern Rural Area adjoins four local government areas: Baw Baw Shire Council to the east, South Gippsland Shire Council to the south-east, Bass Coast Shire Council to the south, and the City of Casey to the west. The population was 3,246 at the 2021 census, with moderate population growth forecasted by 2031. This area includes the Precinct Structure Plan areas of Officer South Employment Precinct (currently in development by the Victorian Planning Authority) and part of the Cardinia Road Employment Precinct which provides a mix of high density residential and commercial and industrial areas.

Open space

There is a total of 88 ha of public open space in the area. The Lang Lang Community Sport Precinct located in Caldermeade makes up 35% of the total (30 ha). There are 13 public open spaces in Southern Rural Area, including 4 passive, 6 active, 1 linear and 2 natural resource areas. Three schools in the area contribute over 2 ha towards restricted open space. There is an additional 213 ha of encumbered and/or not fit-for-purpose open space including creek frontages, coastal and natural resource areas. There are opportunities to make use of these encumbered open spaces in future, including the proposed Southern Rail Trail alignment.

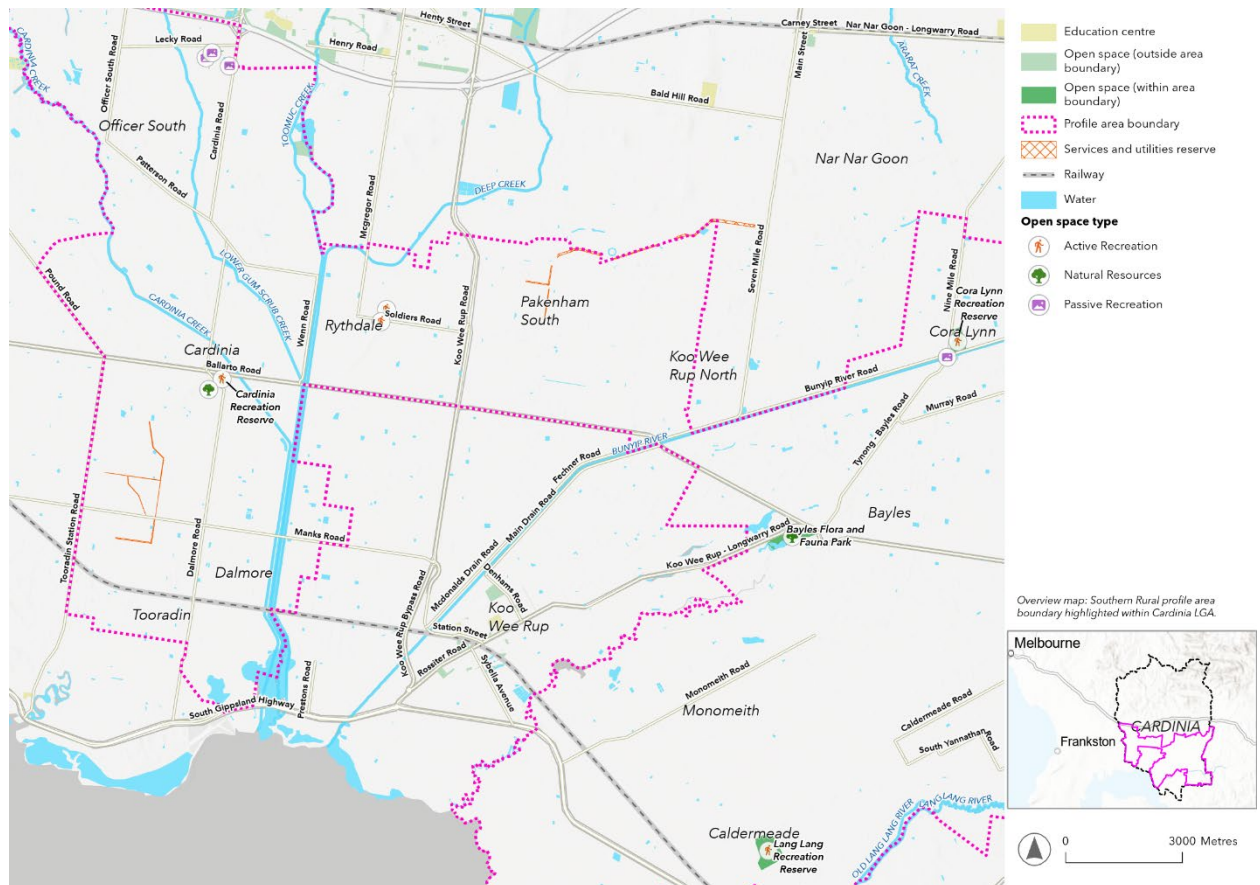


Figure 38: Open space in Southern Rural Profile Area

Open space provision

The total provision of open space in the Southern Rural Area exceeds the benchmark of 5 ha/1,000 residents for current and forecast populations. The provision of open space is currently 27 ha/1,000 residents.

The provision of active open space also substantially exceeds the provision benchmark, reflecting the presence of several large active recreation reserves in the area. Active open space is currently provided at 18 ha/1,000 residents. There is currently 9 ha/1,000 population of passive open space, well exceeding the benchmark of 3 ha. The provision of open space in Southern Rural Area is sufficient to meet the needs of the existing and

future population, and future residential developments will contribute to the increase in open space in the townships. Ensuring open space is within 500m walking distance to residential areas is critical in the development of these areas.

Due to there not being any active open space provided in the Cardinia Road Employment Precinct Structure Plan to support the residential population of that precinct, it is considered that additional active open space will be required to be provided as part of the Officer South Employment Precinct Structure Plan. Council will continue to advocate for and work with the Victorian Planning Authority to achieve open space outcomes that align with the Cardinia Shire Open Space Strategy.

Access to open space

As a result of the majority of the Southern Rural Area being almost devoid of residentially zoned land there are minimal access gaps to open space within the rural parts of this area using the measure of 500m walking distance. It is acknowledged however that walking is unlikely to be the way by which the majority of residents in rural areas will access public open space. Passive open space needs are likely to be met at one of the many local parks or by traveling to open space outside of the area. However, there are opportunities to improve access and use of existing encumbered drainage reserves and waterways.

Active open space needs are also likely to be met at one of the local recreation reserves or at the Lang Lang Community Sport Precinct.

The Southern Rural Area also includes the Officer South Employment Precinct and part of the Cardinia Road Employment Precinct. Although the focus of these areas is primarily on facilitating employment there are also some residential areas included or planned to be included. It is important that the provision of and access to open space in these areas aligns with the Cardinia Open Space Strategy.

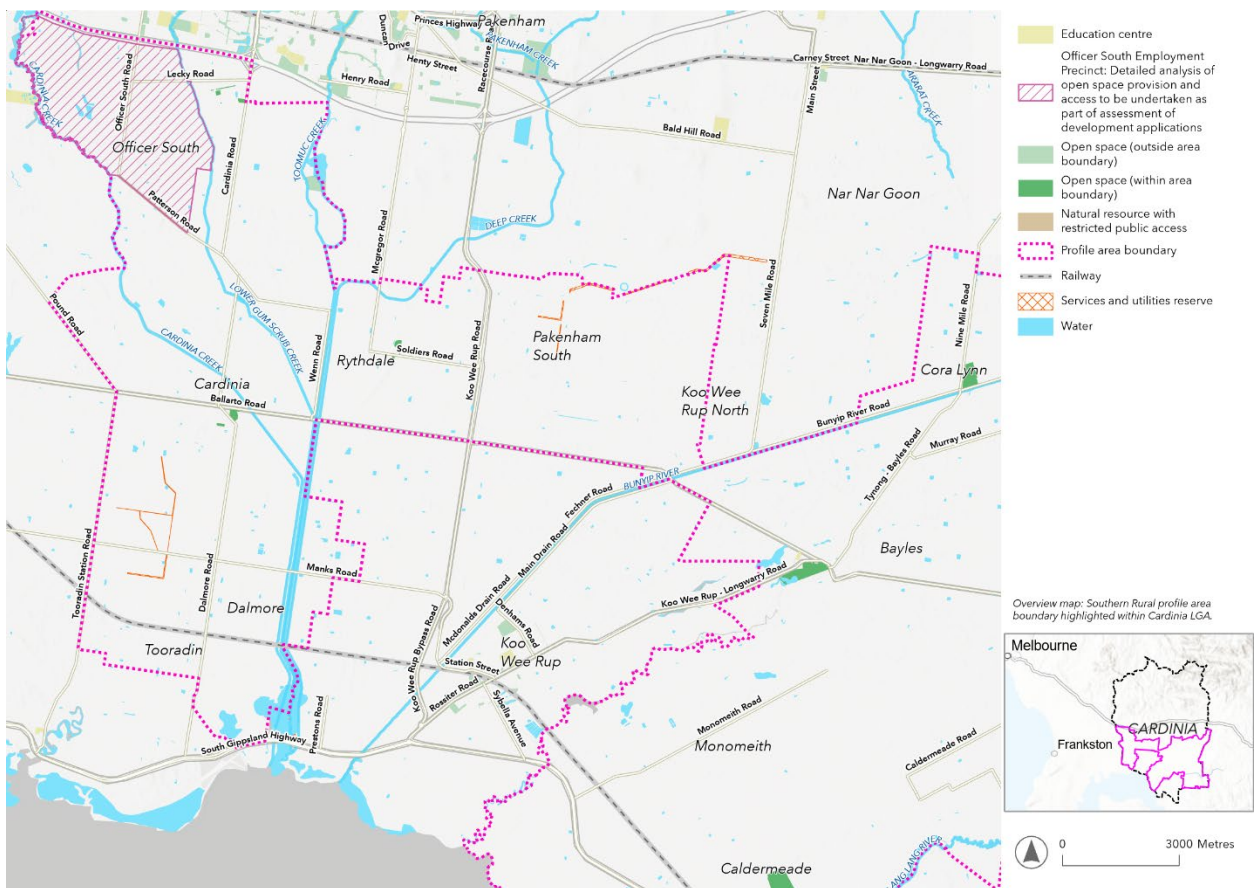


Figure 39: Residential areas in Southern Rural Profile Area without an open space within 500m walk.

Recommendations

The following recommendations are proposed to enhance the open space network in Southern Rural Area.

- Continue to work with the Victorian Planning Authority on the Officer South Employment Precinct PSP to ensure provision and access standards align with the Cardinia's Shire Open Space Strategy.
- Investigate partnerships with land managers of encumbered and undeveloped drainage reserves and waterways to provide passive recreation.